

OSSTF Rainbow District 3  
184 9<sup>th</sup> Avenue, Lively, ON

Phone 692-3923  
Fax 692-0154



2018

# The LINK

## Index:

- President's Message – Political Landscape / Collective Bargaining Issues
- District Officer's Message
- Movember – it's a thing!



## Dates of Interest:

Nov 7th: District Executive Meeting 4:00 pm

## President's Message

### Political Landscape

On October 23rd, the Ford Government introduced legislation to repeal significant pieces of Bill 148 and our hard fought improvements to Ontario's labour laws.

The Conservative government introduced legislation to:

- freeze the minimum wage at \$14 for the next two years
- eliminate two paid sick days for all workers
- cancel fair scheduling rules
- take away equal pay for equal work for less than full time employees
- decrease fines to employers for violations of the Labour Relations Act
- and other changes that will affect Ontario's most precarious workers.

Nov 11th: Remembrance Day



REMEMBRANCE DAY  
*Left We Forget*

Nov 13th: PSSP AGM  
District Office 4:30 pm

Nov 13th Health & Safety  
Training 4:00 pm

WALK INTO RETIREMENT  
WITH A PLAN



Nov 14th: Manitoulin Island  
OTIP Walk into Retirement With  
a Plan -The Anchor Inn  
4:00 pm – 7:30 pm

Nov 15th: Sudbury & Area  
OTIP Walk into Retirement With  
a Plan – Caruso Club  
5:00 pm – 8:00 pm

Nov 21st: Council of Teachers'  
Meeting 4:00 pm  
\*\*\* ALL teachers welcome – see  
your TBU Rep to find out more.

Nov. 22nd: Status of Women  
Fall Gathering 4:00 pm

This legislation removes the most basic protections from workers who need them most. It is an attack on low-income workers, women, people of colour and newcomers who are disproportionately represented in precarious jobs.

The 15 and Fairness movement has initiated swift action to tell elected officials that there will be real consequences to attacking communities and precarious workers...

[www.15andfairness.org/events](http://www.15andfairness.org/events).

#### Collective Bargaining Issues

Please take the time to respond to periodic surveys that we are going to begin sending out provincially as well as locally. This is very important so that we can understand the issues that you feel are important and would like us to bargain. Please do not hesitate to speak to your reps or call the Lively office and speak to James or Sue to let them know what issues you feel need attention.



Register online at: <http://www.otip.com/events>

#### District Officer's Message

One of the first things I learned when I started attending OSSTF meetings and events was that this federation uses acronyms for everything! We have had a number of new members join District 3 in the past few years, so maybe it's time for a local acronym refresher.

**ESSU** – The Educational Support Staff Unit represents clerical workers, information technology staff, library clerks and technicians, programmers, and administrative assistants employed by the Rainbow District School Board. The ESS Bargaining Unit President is Phil Crowe.

**PSSP** – The Professional Student Services Personnel bargaining unit represents workers employed by the Rainbow District School Board who support students directly in non-teaching roles such as psychologist, social worker, psychometrist, speech-language

Nov 29th: CPAC meeting  
4:00 pm

Dec 4th: Health and Safety  
Training 4:00 pm



The moustache in society has involved tales of wisdom, sexual virility, masculinity and higher status.

In Agatha Christie's novels, Hercule Poirot is described as "a little man with enormous moustaches," Throughout Christie's stories, his moustache was described as 'gigantic', 'immense' and 'amazing', pointing to the importance of this physical asset.

In Iowa, it's the law that a man with a moustache may never kiss a woman in public.

Gross Mo Fact: Germanic tribesmen during the Roman Empire used putrid butter to keep their Mo in place. That's attractive!

pathologist, attendance counsellor, and Aboriginal support worker. The PSSP President is Carol Fortin.

SSSC – The Sudbury Student Services Consortium represents workers employed directly by the Consortium to coordinate and ensure safe student transportation for all four local school boards. The SSSC President is Lucie Bisson.

OTBU – The Occasional Teacher Bargaining Unit has its own collective agreement for daily occasional and long-term occasional teachers. The OTBU was consolidated with the Teacher Bargaining Unit several years ago. The T/OTBU President is James Clyde.

TBU – The Teacher Bargaining Unit represents full- and part-time permanent teachers employed by the Rainbow District School Board.

Pension Plans by bargaining unit – Members of the ESSU, PSSP, and SSSC bargaining units contribute to the Ontario Municipal Employees Retirement System (OMERS). Members of the T/OTBU contribute to the Ontario Teachers' Pension Plan (OTPP).

**Attention teachers!** A temporary glitch at the Provincial office may have affected your Certification Initial Rating Statement, Re-evaluation Statement, or Course Approval for upgrading purposes. If you applied for any of these during the period between October 19<sup>th</sup> and October 24<sup>th</sup>, 2018, please contact the Certification Department to verify that your application was received. Applications submitted before October 19<sup>th</sup> or after October 24<sup>th</sup> were not affected.

<https://www.osstf.on.ca/en-CA/services/certification.aspx>

or 1-800-267-7867

### TBU Curling for a Cause 2019

It's that time again! Members of the T/OTBU are invited to come out to Curling for a Cause on Saturday, January 26, 2019 at the Sudbury Curling Club. Teams can register using the link below.

**Deadline for registration: December 20, 2018.**

<https://goo.gl/forms/R187deVcl3cfKSEq2>



ARM (Active Retired members) are collecting your gently used boots for Better Beginnings, Better Futures... if you have boots, of any size, that you can donate, please bring drop them off here at the District Office in Lively – or ask your District Rep to bring them to the next meeting.





The Mo was to fall out of favour during the period spanning the First and Second World Wars with military life generally requiring men to remain clean-shaven. However, the tide was to soon turn back in favour of facial hair. In the post war period of the 1960s the clean-shaven look came to represent conservative values meaning the younger generation began to embrace the Mo as a sign of rebellion.

In the late 60s, Dr. Schnurrbart Snor, received the first moustacheology certification (CM) at the City College of Newark and headed to Washington, D.C. to form the American Moustache Institute to work towards solving what he described as America's 'ugliness crisis'. "America no was a very much pretty place," Dr. Snor would say in his broken English. Moustache growth was "one solution to improving American good looks and reducing ugliness."

Policemen in large cities in India are sometimes paid a bonus if they grow a moustache, as it is considered a symbol of virility and power... and their bosses believes it makes them command more respect.

The moustache is a style that has sadly, been relegated to antiquity: It is a quaint, often goofy relic that is looked upon with derision in the modern world.

**Movember:** (a portmanteau of the Australian-English diminutive word for moustache, "mo", and "November") is an annual event involving the growing of moustaches during the month of November to raise awareness of men's health issues, such as prostate cancer, testicular cancer, and men's suicide.



In 2004, an unrelated group in Melbourne, Australia organised an event where 30 men would grow a moustache for 30 days in order to raise awareness for prostate cancer and depression in men. This group would later become the Movember Foundation charity.

By encouraging men (whom the charity refers to as "Mo Bros") to get involved, Movember aims to increase early cancer detection, diagnosis and effective treatments, and ultimately reduce the number of preventable deaths. Besides annual check-ups, the Movember Foundation encourages men to be aware of family history of cancer and to adopt a healthier lifestyle.

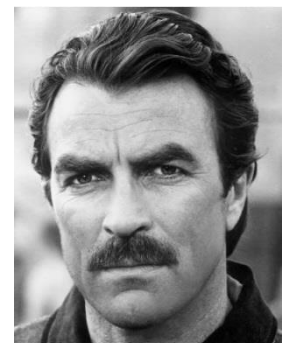
Since 2004, the Movember Foundation charity has run Movember events to raise awareness and funds for men's health issues, such as prostate cancer and depression, in Australia and New Zealand. In 2007, events were launched in Ireland, Canada, Czech Republic, Denmark, El Salvador, Spain, the United Kingdom, Israel, South Africa, Taiwan and the United States.

Since Movember's inception in 2003, a global army of over 4 million Mo Bros and Mo Sistas have grown or supported the growth of a moustache. The result has been more than \$500 million raised, billions of conversations generated about men's health and over 800 men's health programs funded - proving that a little facial hair grown by a group of committed people can truly change the world.

**Happy 'staching, Mo Bros!**

**Here are a few timeless favorites...**

The Chevron Moustache has a name that says it all: it's a moustache, shaped like a chevron that covers your whole top lip. Consensus of women around the world - Tom Selleck has the sexiest, sleekest chevron moustache of all celebrities, of all time. Ladies - do you concur?



Robert Redford got the Mo up on the silver screen in the landmark film 'Butch Cassidy & the Sundance Kid' There was no denying that the Mo was back in vogue, forming part of what is now known as the 1970s fashion "Triple Threat" – the moustache, the perm and the turtleneck. 😊



In a 2008 poll from the British newspaper The Guardian, 61 percent of respondents found the moustache to be gentlemanly and sophisticated, while 39 percent believed it was worn only by fools and fiends.

### More moustache trivia:

In a deck of cards, the King of Hearts is the only king without a moustache.



In 1967, The Beatles gave away cardboard moustaches with their album Sgt. Pepper's Lonely Hearts Club Band.



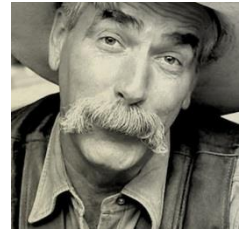
The Horseshoe Moustache style is like a standard moustache, but includes two long bars of mustache hair pointing downwards, often extending all the way to the chin.

The Fu Manchu Moustache was named after a fictional Chinese criminal character

in a series of novels by British author Sax Rohmer during the first half of the twentieth century. The Fu Manchu is long, thin, and narrow and is grown entirely from the upper lip. It is not attached to the face at any other point.



The Walrus Moustache - the walrus moustache is undeniably a statement. Big in the 19th century and earlier part of the 20th century, this style relies on growing out your facial hair for over five months. The Walrus is a mustache that can only be pulled off by men in cowboy hats or dudes who whittle on the porch. The Walrus completely covers the upper lip and is usually discolored by tobacco smoke or years of stroking it pensively.



The Handlebar Moustache boasts curved ends which spiral toward the cheekbones. Styling the handlebar is simple; use a small dab of moustache wax to wind each end of your moustache outward, hence creating curved ends. This style is becoming popular once again thanks to the Hipsters.



The Pencil Moustache - it's a super-thin strip of hair that outlines your upper lip. It worked well for Clark Gable and Errol Flynn in the 1920's, but not so popular today due to urban slang jokingly referring to it as the "molestache" – that's all I'm saying - you will have to [Google](#) it.



...and then there are those who take their 'staches to the extreme...

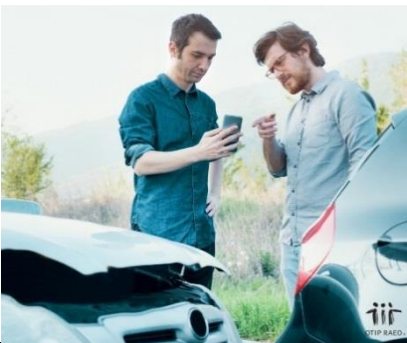




The average one-month old moustache is capable of holding 30ml of liquid or 10 per cent of a glass of beer before leaking its contents down the owner's face. 🤔

On average, a man with a moustache touches it 760 times a day. 😂  
Stroking of the moustache Increases concentration and cognitive ability (and evilness).

During the Victorian era, noblemen used moustache spoons to protect their moustaches when eating soup. It was made with a guard on its rim that acted as a barrier between mustache and soup. I'm not making this up! 😊



*Mustache* and *moustache* are both correct spellings of the same word. *Mustache* is the most common spelling in the United States. *Moustache* is used in other English-speaking countries.



You probably can't get your Movember moustache insured, but as a member of the education community, you are eligible for exclusive savings on car and home insurance from OTIP.

- Save up to 25% on auto insurance
- Save up to 50% on home insurance when you insure both your car and your home with OTIP

Visit <http://www.otipinsurance.com/union> for details.

How a car accident can impact your insurance premiums  
Car accidents can happen to anyone on the road, even great drivers. Whether it's a sudden stop causing a fender bender or failure to break at a red light, accidents happen and can impact your insurance premium. To learn more, visit [www.otipinsurance.com/article28](http://www.otipinsurance.com/article28)

**Members... Check out the link to OTIP OSSTF members page:**

<https://www.otipinsurance.com/OSSTF3>